

MANAGEMENT OF DIFFERENTIATED SERVICES WITH ACTIVE POLICIES

C13

Paulo Rogério Pereira
Instituto Superior Técnico, Universidade Técnica de Lisboa,
INESC, Rua Alves Redol, 9, 1000-029 Lisboa, Portugal.
Voice: +351-213140345. Fax: +351-213145843.
prrp@inesc.pt

Elisáudio Menezes, Djamel Sadok
Universidade Federal de Pernambuco, Centro de Informática,
Caixa Postal 7851, CEP 50732-970, Recife, PE, Brazil.
Voice: +55-81-2718430. Fax: +55-81-2718438.
(esm, jamel)@di.ufpe.br

Paulo da Fonseca Pinto
Faculdade de Ciências e Tecnologia, Universidade Nova de Lisboa,
UNINOVA, Quinta da Torre, 2825-114 Monte de Caparica, Portugal.
Voice: +351-212948300. Fax: +351-212948332.
pfp@uninova.pt

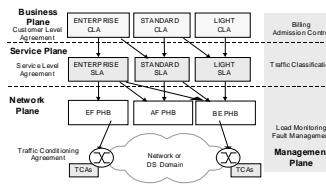
Services Offered

- **ENTERPRISE**: best performance, offers bounded delay guarantees, making it ideal for delay sensitive applications such as videoconferencing. This service is normally implemented using the DiffServ Expedited Forwarding (EF) PHB.
- **STANDARD**: cheaper than ENTERPRISE, performs better than LIGHT. This service offers minimum QoS guarantees, whereby the network seems lightly loaded. It is normally implemented using the DiffServ Assured Forwarding (AF) PHB.
- **LIGHT**: characterised by the occupation of whatever network resources are left. It is implemented using the DiffServ Best Effort (BE) PHB.

Refinement

- Start with high-level policies, specifying QoS requirements to be offered to users.
- Successively refine these requirements down to equipment level, enforcing them with policies.
- Several policy layers correspond to different abstraction levels, forming a hierarchy.
- The refinement is done by analysing each QoS parameter dependencies, and building a policy that enforces the contracted requirements.
- Active policies are active objects that act on managed objects to enforce a contract.
- Possible different semantics: best-effort, statistic, deterministic.

System Architecture



Business Policies

USER ADMISSION POLICIES

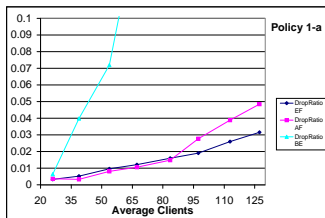
- Users are accepted until a fixed maximum number of users is reached for each PoP.
- Users are accepted until a fixed maximum number of users is reached for each class, (Enterprise, Standard), after which the users get a lower available class, possibly Light.
- Similar to a, but the maximum number of users depends on the current PoP load.
- Combination of b and c: all maximums depend on current PoP load.

Service Policies

RESTRICT MAPPING OF TRAFFIC TO PHB ACCORDING TO APPLICATION

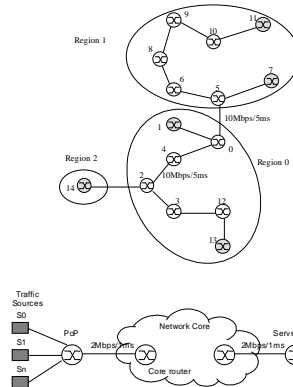
Policy	telnet/TCP	CBR/UDP	OnOff/UDP	http/TCP	ftp/TCP
1	any	any	any	any	any
2	any	any	any	AF BE	BE
3	EF AF	EF AF	EF AF	AF BE	BE
4	EF AF	EF AF	EF AF	BE	drop

PROBLEM with no Policy:
Significant packet drops, even for low traffic loads.

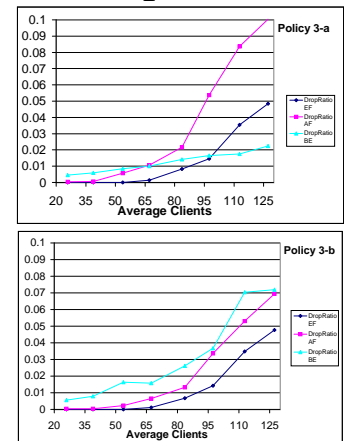


- This is an **active policy** that dynamically adjusts the maximum number of users for each PoP, and the maximum number of users allowed in each class.
- It monitors the packet drops in each PHB for each 2 seconds period.
- If there are any EF, or 5 AF packet drops, the maximum number of clients in their class is set to the current number of clients minus 3, keeping a minimum of 5 clients.
- Current users remain active, but new users are refused access or downgraded, to prevent further network overload.
- The maximum total number of clients (all classes) is reduced by 10 if there are more than 50 packet drops in a 2 seconds period.
- The maximum number of clients in each class is increased back to allow 3 new clients, if there are no packet drops, growing until its normal value.

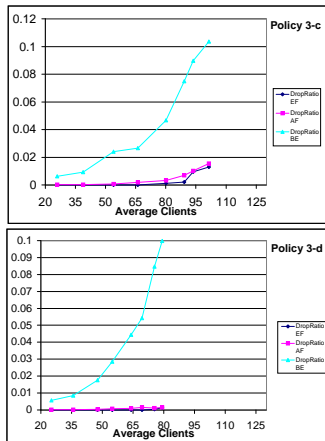
Network Topology



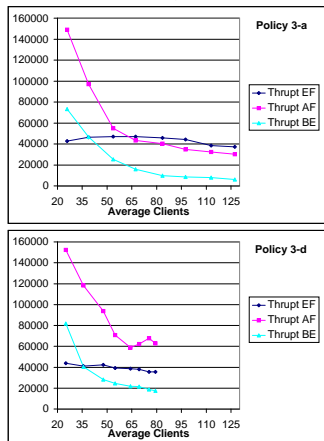
Drop Ratio



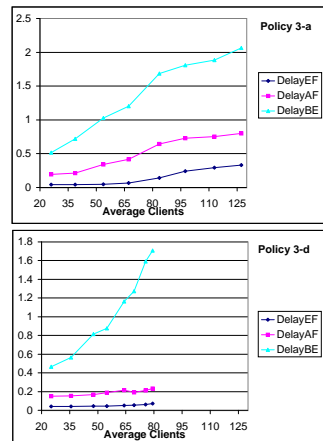
Drop Ratio



Throughput



Delay



Conclusions

- QoS offered to users is refined to different abstraction levels down to the equipment.
- Policies enforce the QoS requirements.
- A policy hierarchy is used to manage the system, supporting the different abstraction levels, and a distributed system.
- Experimental results show that active policies adapt to network state improving the QoS offered to users, and perform better than non active policies.
- Some active policies can be reused to control different parameters, by associating them with the correct variables, and adjusting the thresholds.

References

- [1] S. Blake et al., "An Architecture for Differentiated Services", RFC 2475, December 1998.
- [2] Paulo Pereira, Paulo Pinto, "Algorithms and Contracts for Network and Systems Management", IEEE Latin American Network Operations and Management Symposium, Rio de Janeiro, Brazil, 3-5 December 1999, pp.385-396. ISBN: 85-900382-3-8.
- [3] VINT Network Simulator (version 2), <http://www-mash.cs.berkeley.edu/ns>
- [4] J. Heinanen et al., "Assured Forwarding PHB Group", RFC 2597, June 1999.
- [5] V. Jacobson et al., "An Expedited Forwarding PHB", RFC 2598, June 1999.